

Sea & Land Colourtone

Integral Colour

Colour Chart for Ready Mixed Concrete and Mortar



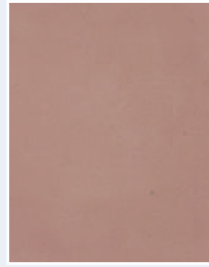
Midnight B



Smoke B



Lagoon A



Rose A



Tarragon A



Clay A



Dusk B



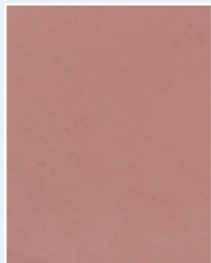
Biscuit B



Pistachio B



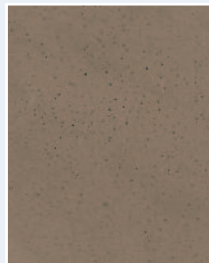
Mocha C



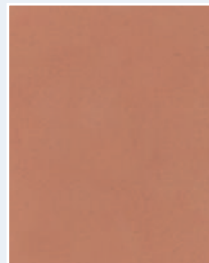
Blush C



Camel B



Chocolate B



Terracotta C



Caramel C

The colours shown represent Sea & Land Precast Colourtone Integral Colour with a natural unsealed finish in a standard concrete or mortar made using a mid grey Portland cement. The final colour can be influenced by a number of factors. Please refer to the Technical Data Sheet.

Sea & Land Precast Colourtone

5 Holly Road,
Red Marsh Industrial Estate,
Thornton Cleveleys,
Lancashire FY5 4HH
Tel: +44 (0) 1253 857784
Fax: +44 (0) 1253 820330

